



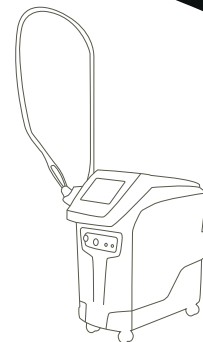
MOTUS AY

## Recognize Your Star Player



Focusing on Effectiveness and Comfort  
with Moveo

Motus stands out in **Aesthetics** and **Dermatology**



**DEKA**  
Innate Ability

**DEKA**  
Innate Ability

## MOTUS AY Quick Wins:

Hair Removal | Vascular Lesions  
Bening Pigmented Lesions | Onychomycosis  
Non ablative Skin Rejuvenation  
Pseudofolliculitis Barbae (PFB) | Leg Veins

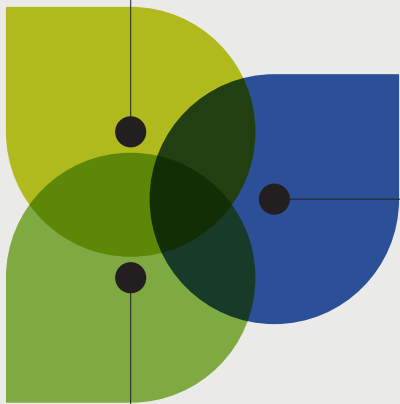
### Key Principles

Motus AY uses a combination of the most common wavelengths: **Alex 755 nm** – the most effective in hair removal and **Nd:YAG 1064 nm** in vascular treatments.

### Why Choosing Motus:

#### Double Wavelength (Alex + Nd:YAG)

Wide range of applications: not only hair removal and pigmented lesions but also vascular treatments, to meet the growing demand of patients.



#### Moveo Technology

New frontier in hair removal and pigmented lesions: guarantee of safety, comfort, speed and results.

#### Incomparable Quality to Price Ratio

A succesfull combination of effectiveness and cost and low maintenance.



THE SCIENCE BEHIND



## 100% of Energy Absorption with Moveo Technology

The new handpiece technology integrates a sapphire tip that comes in contact with the skin, reducing the reflected energy loss. The new hair removal method consists in repeated passes on treated areas that cause gradual heating of the vital parts of hairs.

### Effectiveness + Safety

The absence of energy dispersion means lower power for the same result.

### Speed + Comfort

Multipass action allows to treat big areas in few minutes.



New plug-in  
connection system

## Moveo PL: The New Moveo Handpiece for Pigmented Lesions

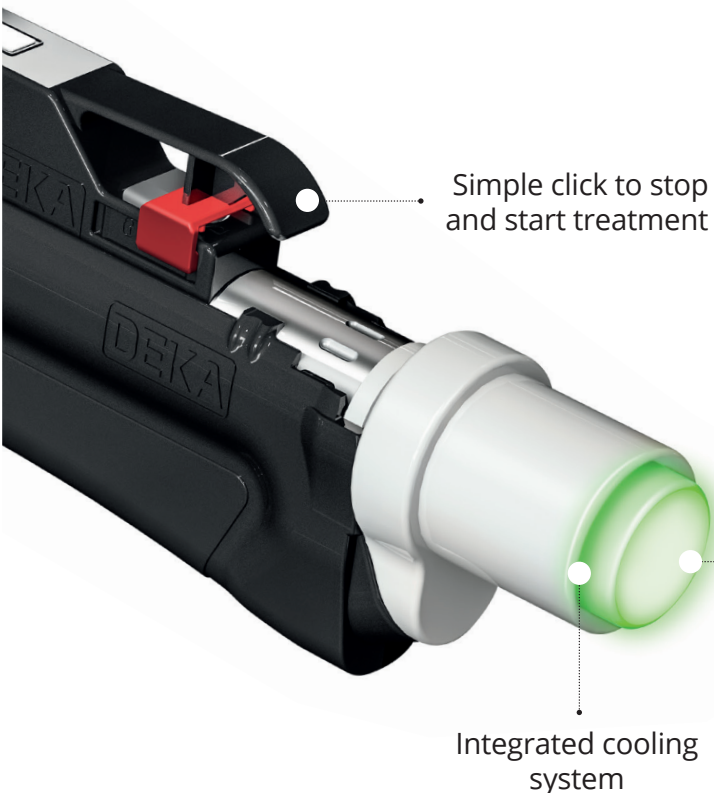
Max results are obtained by exploiting the ideal wavelength in pigmentary (Alex 755 nm) in a **low fluence-multipass** delivery process with integrated cooling, giving the greatest comfort and safety to patients.

MOVEO PL is safe, extremely effective and allows to treat any skin type in very few sessions, **with minimal side effects or downtime.**



### Choose up more than 10 Standard Handpieces

2.5-20 mm spots available with automatic spot recognition system and ergonomic connector for air-cooling.



Simple click to stop and start treatment

20 mm sapphire tip

Integrated cooling system

THE SCIENCE BEHIND

Motus **AY**

## Revolutionary Technology Innovation

Motus AY makes hair removal with Alex effective, painless and simple for both **light phototypes** and **the darker ones**, as well as with thin and light hair.

The Nd:YAG source broadens the field of action by offering the possibility of dealing with **vascular lesions** such as capillaries, or telangiectasias.

**Unique in-motion Alex and Nd:YAG lasers**

**Smoke free procedure**

**Double energy delivered to skin**

**Treatment for all phototypes**



effectiveness



speed



safety



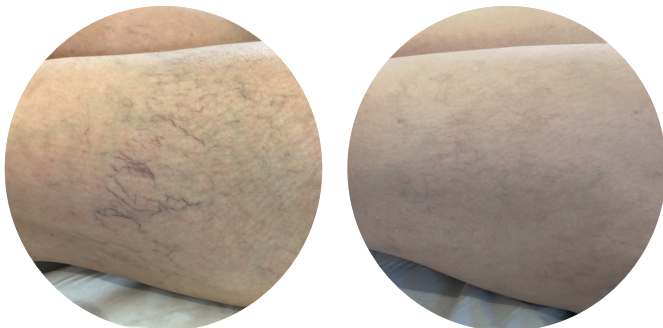
simplicity



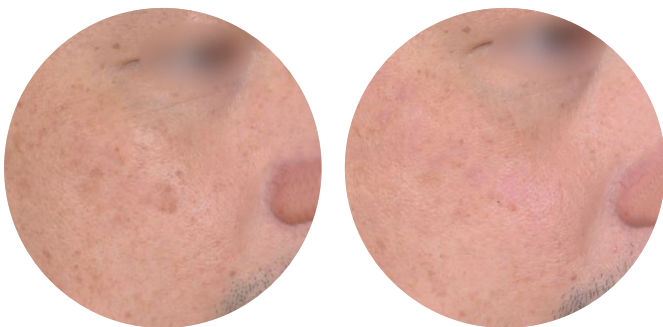
## Clinical Results



Alexandrite laser with Moveo Technology.  
Courtesy of **M. Troiano**, M.D.  
and **Prof. P. Bonan**, M.D. - Florence, Italy



Nd:YAG laser source.  
Courtesy of **Setsuko Beauty  
Clinic Ltd**,  
Bridgwater - United Kingdom



Moveo PL handpiece.  
Courtesy of **Li Ying Lin**,  
M,D. - Elite Clinic,  
Taipei-Taiwan



# Knowing Our Audiences and Market

Thanks to the growing beauty consciousness among consumers, worldwide, the global hair removal market is witnessing a high-paced increase in its size and valuation.

## GLOBAL HAIR REMOVAL\*:



**1st**

REQUESTED TREATMENT  
WITHIN AESTHETIC INDUSTRY



**+17%**

COMPOUND ANNUAL  
GROWTH RATE



**OVER**

**3.9 billion \$**

EXPECTED UNTIL 2026

\*Sources: Market Study Report "Global Laser Hair Removal Market Size Status And Forecast 2019-2025"  
Acumen Research and Consulting "Laser Hair Removal Market Size, Share, Trends, Scope, Growth Opportunity and Forecast 2019-2026"



## The Floor to Practitioners

“ In the last several years we’ve had lasers that are safe for dark skin, but the limit has been efficacy. But the Motus AY was designed to reduce the laser’s energy loss as it moves over the skin. The concentrated, doubled energy transfer to skin means the Motus works better than other lasers on darker skin tones.”

**Dr. Paul Jarrod Frank**, Dermatologist,  
New York – USA

“ With Motus AY DEKA has changed the whole concept of alexandrite laser. The effectiveness of this laser source is scientifically and clinically recognized for photoepilation. Thanks to the innovative MOVEO Technology, laser hair removal with alexandrite laser is now not only EFFECTIVE but also SAFE and PLEASANT, suitable for darker skin types too”

**Prof. Paolo Bonan M.D.**  
Villa Donatello Clinic, Florence – Italy

THE PERFECT MATCH

## MOTUS AY Strength

Operator and patient total comfort benefits:

- Fastest and only **in-motion Alex** and **Nd:YAG**
- **Fluididity** and lightness of the contact handpiece
- **Easy** to learn and use
- Effective on **all phototypes**
- **No energy loss**
- **Fastest** treatment: treats 100 cm<sup>2</sup> in approx 25 sec.
- **No burning** or skin discolouration
- **No pain**

 **Only for DEKA Users:**  
a great support in medical practice  
**DEKA** *Club*

**Moveo** Tecnología

2.5-20 mm spot sizes hanpieces

More than **200 protocols developed**  
for Moveo and standard handpieces



**Alex 755 nm**  
laser source

**Nd:YAG 1064 nm**  
laser source

16 A electrical  
supply

# Technical Specifications

MOTUS AY		
<b>Laser Source</b>	Alexandrite 755 nm	Nd:YAG 1064 nm
<b>Energy per Pulse</b>	31 J (max)	63 J (max)
<b>Laser Power</b>	65 W (max)	95 W (max)
<b>Repetition Rate</b>	From 1 to 10 Hz	From 0.3 to 10 Hz
<b>Spot Sizes (optional)</b>	5 mm, 7 mm, 10 mm, 12 mm, 14 mm, 15 mm, 16 mm, 18 mm, 20 mm; Moveo HR, Moveo PL	
<b>Aiming Beam</b>	Green Diode Laser @532 nm < 4 mW	
<b>Emission Control</b>	Fingerswitch or Footswitch	
<b>Handpiece Cooling</b>	Integrated Skin Cooler	
<b>Dimensions and Weight</b>	90 (H) cm x 51 (W) cm x 83 (D) cm   90 Kg	
<b>Electrical Requirements</b>	230 Vac – single phase – 50/60 Hz – 16 A	

**CAUTION** - Visible and invisible laser radiation. Avoid eye or skin exposure to direct or scattered radiation. Class 4 laser product.  
This brochure is not intended for the market of USA.

CE  
0123

MotusAY

**DEKA**  
Innate Ability

Follow us on  



  
[www.dekalaser.com](http://www.dekalaser.com)

Dealer stamp

 **DEKA M.E.L.A. s.r.l.**  
Via Baldanzese,17 - 50041 Calenzano (FI) - Italy  
Tel. +39 055 8874942 - Fax +39 055 8832884

**DEKA Innate Ability**  
A spin-off of the El.En. Group, DEKA is a world-class leader in the design and manufacture of lasers and light sources for applications in the medical field. DEKA markets its devices in more than 80 countries throughout an extensive network of international distributors as well as direct offices in Italy, France, Japan and USA. Excellence is the hallmark of DEKA's experience and recognition garnered in the sphere of R&D in over thirty years of activity. Quality, innovation and technological excellence place DEKA and its products in a unique and distinguished position in the global arena. DEKA manufactures laser devices in compliance with the specifications of Directive 93/42/EEC and its quality assurance system is in accordance with the ISO 9001 and ISO 13485 standards.